





Important: Keep this document

The image above is a CM2S thermostat. The design of other products in the CM range may vary.



CAUTION! Installation and connection should only be carried out by a qualified person.

- Only qualified electricians or authorised service staff are permitted to open the thermostat.
- If the thermostat is used in a way not specified by the manufacturer, its safety may be impaired.
- Before commencing installation, the thermostat must be first disconnected from the mains.
- If this equipment is installed or used in a way not specified by the manufacturer, its safety may be impaired.



Description

The room temperature is measured using an internal gas filled sensor and then compared with the set point. When the set point is above the room temperature, there is a call for heat and the thermostat switches out on terminal 2. When the set point is below the room temperature, there is no call for heat and the thermostat switches out on terminal 1.

Information

PRODUCT CODE	DESCRIPTION	LIGHT	ON / OFF SWITCH	CONTACT RATING
CM2	Heating-Cooling Room Thermostat	-	-	230 & 24V~, 10(3)A
CM3	Heating-Cooling Room Thermostat	Yes	-	230V~, 10(3)A
CM3-24	Heating-Cooling Room Thermostat	Yes	-	24V~, 10(3)A
CMF	Frost Room Thermostat	Yes	-	230V~, 10(3)A
CMT	Heating-Cooling Tamperproof Room Thermostat	-	-	230 & 24V~, 10(3)A
CM2S	Heating-Cooling Room Thermostat	-	Yes	230 & 24V~, 10(3)A
CM3S	Heating-Cooling Room Thermostat	Yes	Yes	230V~, 10(3)A

Specification

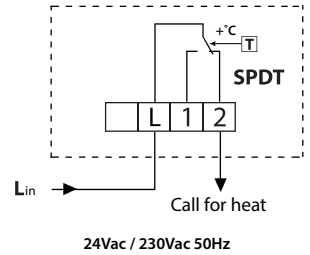
PROTECTION CLASS	II (IEC 60536)	ADMISSIBLE HUMIDITY	5-95%RH
DEGREE OF PROTECTION	IP20 (EN 60529)	SWITCHING DIFFERENTIAL	± 1°C
AMBIENT TEMPERATURE	0 ... 50°C	POLLUTION DEGREE	2
WEIGHT (KG)	0.11 approx.	TEMPERATURE SENSOR	Gas filled
LOCKABLE RANGE	Yes	SWITCH OUTPUT	SPDT

CM Range

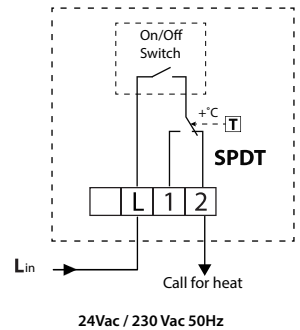
Heating-Cooling Room Thermostat



Product Code	CM2
Power Supply	230V & 24V
Temperature Range	5 ... 35°C
Heat Anticipator	No



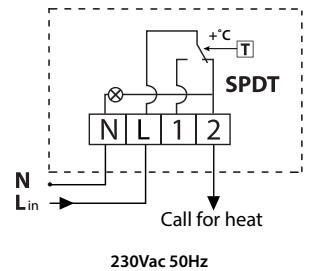
Product Code	CM2S
Power Supply	230V & 24V
Temperature Range	5 ... 35°C
Heat Anticipator	No



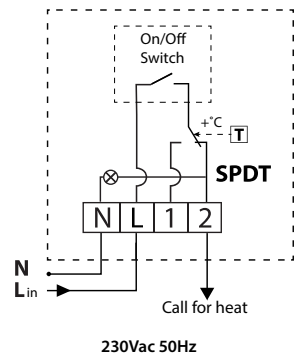
Heating-Cooling Room Thermostat with Light



Product Code	CM3
Power Supply	230V
Temperature Range	5 ... 35°C
Heat Anticipator	Yes



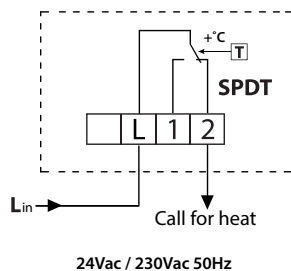
Product Code	CM3S
Power Supply	230V
Temperature Range	5 ... 35°C
Heat Anticipator	Yes



Heating-Cooling Tamperproof Room Thermostat



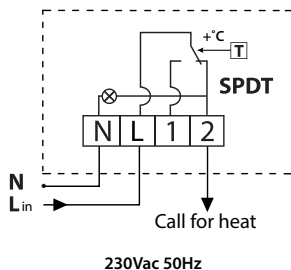
Product Code	CMT
Power Supply	230V & 24V
Temperature Range	5 ... 35°C
Heat Anticipator	No



Frost Room Thermostat with Light



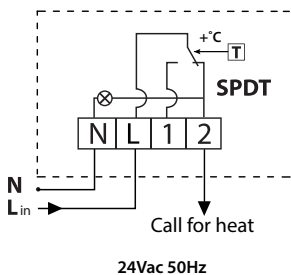
Product Code	CMF
Power Supply	230V
Temperature Range	-5 ... 15°C
Heat Anticipator	Yes



Heating-Cooling Room Thermostat with Light 24V



Product Code	CM3-24
Power Supply	24V
Temperature Range	5 ... 35°C
Heat Anticipator	Yes

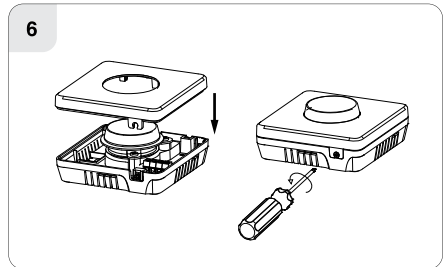
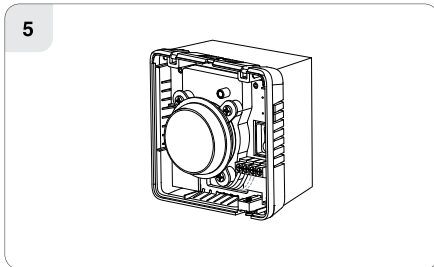
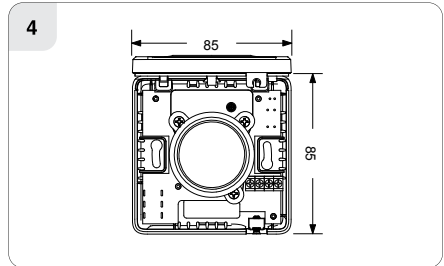
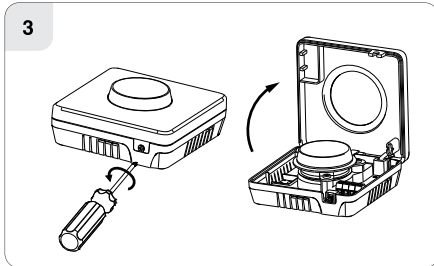
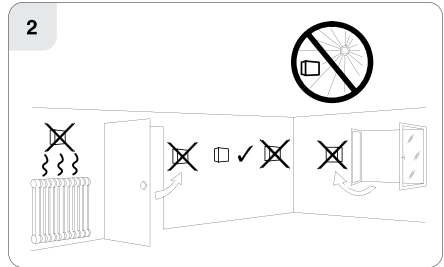
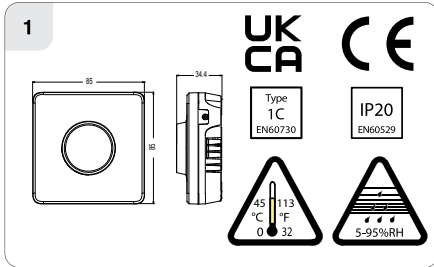


IMPORTANT

- Wiring diagrams above are shown for heating applications.
- Keep this document.

Installation

- 1) Remove the thermostat from its packaging.
- 2) Choose a mounting location so that the thermostat can measure the room temperature as accurately as possible.
 - Mount the thermostat 1.5 metres above the floor level.
 - Prevent direct exposure to sunlight or other heating / cooling sources.
- 3) Use a philips screwdriver to loosen the screw on the bottom of the thermostat to open the front housing.
- 4) Screw the backplate onto a back box or directly to the surface.
- 5) Wire the thermostat according to the wiring diagrams on pages 2 & 3.
- 6) Close the front housing and tighten the screw on the bottom of the thermostat.



The crossed out wheelie bin symbol on this product indicates that this product must not be disposed of in your general waste. It can be taken to your Local Authority Civic Amenity site for free or returned to your retailer for free when you are buying a replacement. Inappropriate waste handling could lead to negative effects on the environment and human health. With your cooperation you contribute to the correct disposal, reuse, recycling and recovery of the components of this product and the protection of the environment.



EPH Controls IE

021 471 8440
technical@ephcontrols.com
www.ephcontrols.com
Cork, T12 W665

EPH Controls UK

01933 322 072
technical@ephcontrols.co.uk
www.ephcontrols.co.uk
Harrow, HA1 1BD